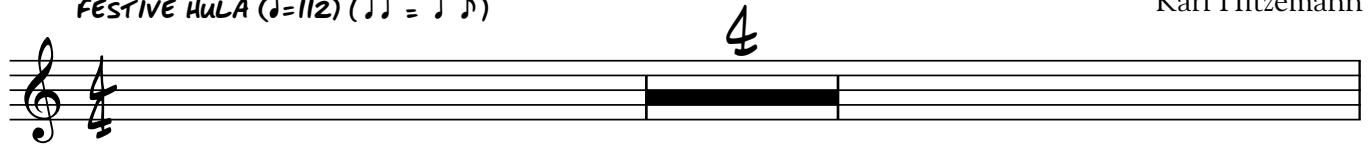


# A Hawaiian Christmas

FESTIVE HULA (♩=112) (♩ =  $\overset{3}{\text{♩}}$ )

Karl Hitzemann



**5** *mf*

Me - le, me - le                      Ka - li - ki - ma - ka                      Hau - 'o - li Ma - ka - hi - ki  
may lay, may lay                      kah lee key mah kah                      how oh lee mah kah hee kee

**9**

Hou!    Mer - ry Christ - mas and                      Hap - py New Year,  
ho

**1.**    **2.**

too!

**14**

San - ta's com - in'!    He'll bring    lots of pres - ents                      in    a    mag - ic ca -  
Christ - mas lights at    a    fun,    fes - tive lu - au,                      hu - la    danc - ers be -

**18**

noe.    He'll be wear - in'                      a    bright    red    suit, though    he  
gin.    Lots of peo - ple                      and    lots    of    mu - sic,    the

## A Hawaiian Christmas - 2

won't be wear - in' his shoes. } Me - le, me - le  
 u - ku - le - les will sing. } may lay, may lay  
 oo koo lay lays

Ka - li - ki - ma - ka Hau - 'o - li Ma - ka - hi - ki Hou!  
 kah lee key mah kah how oh lee mah kah hee kee ho

Mer - ry Christ - mas and Hap - py New Year, too!

Me - le, me - le Ka -

li - ki - ma - ka to you!